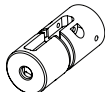


# L96 / TYPE 96 HOP UP INSTRUCTION MANUAL

JA-3608

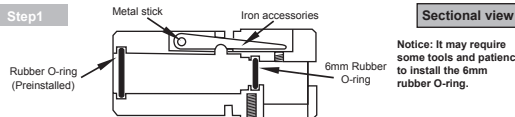
## Preparation Checking the package contents



Hop Up Body



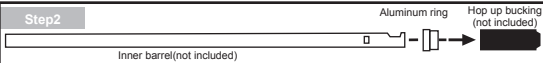
## Step1



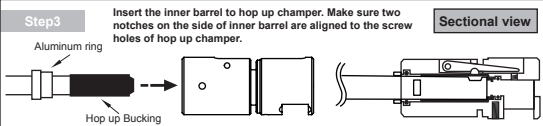
## Sectional view

Notice: It may require some tools and patience to install the 6mm rubber O-ring.

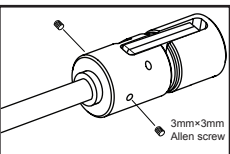
## Step2



## Step3

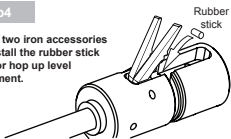


## Sectional view

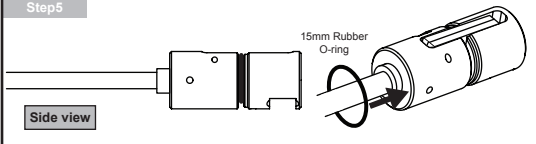


## Step4

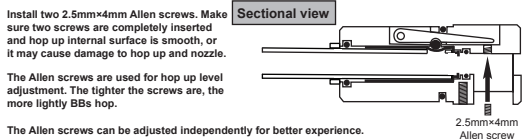
Flip up two iron accessories and install the rubber stick used for hop up level adjustment.



## Step5



## Side view

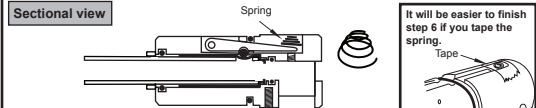


Install two 2.5mm\*4mm Allen screws. Make sure two screws are completely inserted and hop up internal surface is smooth, or it may cause damage to hop up and nozzle.

The Allen screws are used for hop up level adjustment. The tighter the screws are, the more lightly BBs hop.

The Allen screws can be adjusted independently for better experience.

## Sectional view



It will be easier to finish step 6 if you tape the spring.

## Step6

